



www.infographicsystems.com
www.GE-Interlogix.com

Topaz

The Intelligent Choice for Access Control

Overview

Topaz provides a fully integrated solution for access control, alarm monitoring and photo ID badging applications. Topaz is packaged with everything required to get your system up and running quickly and reliably. Simplicity and convenience are integrated with original tools such as Auto Configuration and Instant Access. Topaz' unique Internet browser platform and interactive color graphics redefine the industry standards for operational simplicity. Topaz offers functionality, connectivity and reliability. Topaz is packaged in complete two or four-door kits including everything needed for systems up to 256 readers.

Customize Tools

Topaz offers an extensive range of tools to customize the system to meet the requirements of the user. Incorporated in the software are predefined password templates, time schedules and access groups that are suitable for use by many system users. These features, combined with bulk card loading and Auto Configuration, ensure that the system is fully operational with a minimum of time and effort.

Fully Functional

The Topaz server operates as a fully functional workstation. In addition, the user may add four more fully functional workstations. Both the server and the workstations include dynamic and fully interactive maps with on-screen CCTV call up, PTZ control, report and event printing. Each can also be used as an enrollment or assessment station for the integrated photo badging system.

Auto Config

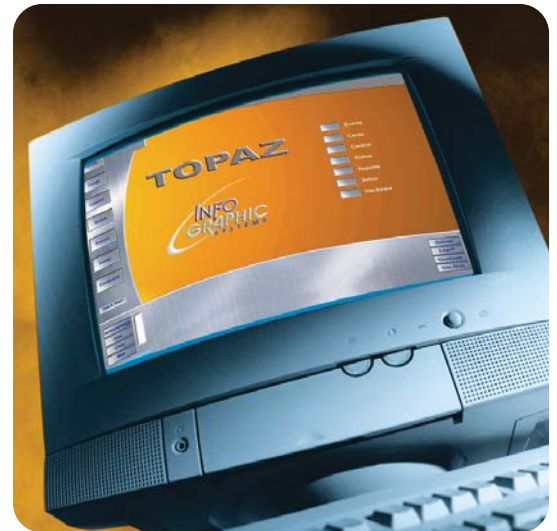
With a click of the mouse, the user can initiate the Auto Configuration program that detects field panels, reader interfaces, readers/keypads, alarm points and REX devices connected to the Topaz system. It will also detect any connected dial-up modems, network cards and workstations. This utility configures all of these devices, enters them in the system database and creates a ready to go access control system. Topaz even prompts the user to Batch Add cards, activating the cards instantly with a mouse click.

Internet Browser Interface

Topaz empowers the user with a distinctive yet familiar interface and command structure utilizing the Microsoft Internet Explorer browser. This provides the user with a web type environment to easily administer and operate the system.

Badging

Create badges easily utilizing Topaz' integrated video badging and photo ID facilities. The video badging and imaging facilities include a full badge design and drawing package with multi-layer design tools and drag and drop capabilities. The full editing package also includes digital photo capture, data image and graphics import, plus grid, cropping and image manipulation capabilities. The sophisticated photo capture tool provides vertical and horizontal photo centering controls, brightness, contrast, color, intensity and hue controls for the photo image. In addition, it features a unique multi-frame capture, which allows the subject to choose the best likeness from several photos. Camera settings can be stored for prevailing ambient light levels. Photos may also be imported from remote video cameras and digital still cameras.



Topaz

Interactive Color Graphics

Operators have full system control through the use of dynamic alarm, reader and relay icons displayed on maps or other graphical images which may be imported from a variety of standard graphic file types. The maps have full drill-down capabilities to the device level. Devices such as relays and doors may be operated, armed or disarmed and alarms may be acknowledged using simple mouse clicks on the appropriate icons.

Instant Access

Eliminate waiting for the download of database information to field panels with Topaz' Instant Access tool. This feature provides protection during data downloads to field panels over a dial-up modem, LAN or extended RS-485 communications link. Instant Access ensures the full functionality of the system during downloads including access operations and alarm monitoring.

Data Guard

Data Guard eliminates the potential for database corruption in field panels due to communication failures during downloads, especially over dial-up modems. In many systems, a corrupt, poor, unstable or severed connection can leave a field panel unable to grant access or annunciate alarms. Data Guard retains the last complete panel database as a default until the update has been confirmed, ensuring the integrity of the database in the field panel.

Report Generation

Report generation could not be easier. Dozens of pre-configured reports are provided, arranged by cardholders, operators, individual device types (i.e. workstations, field panels, readers, alarms, relays) system events, alarm events, alarm history, and operator actions. In addition, the system is equipped with a point-and-click customizable Employee Report Generator tool with multi-level filtering.

DARM (Delayed Alarm Reporting and Monitoring)

DARM provides adjustable entry and exit delays which allow the system to act as both an access control and intrusion detection panel. When used in conjunction with IKE keypads, alarm devices such as motion detectors and door contacts can be remotely viewed, armed and disarmed.

CCTV Camera with PTZ Control

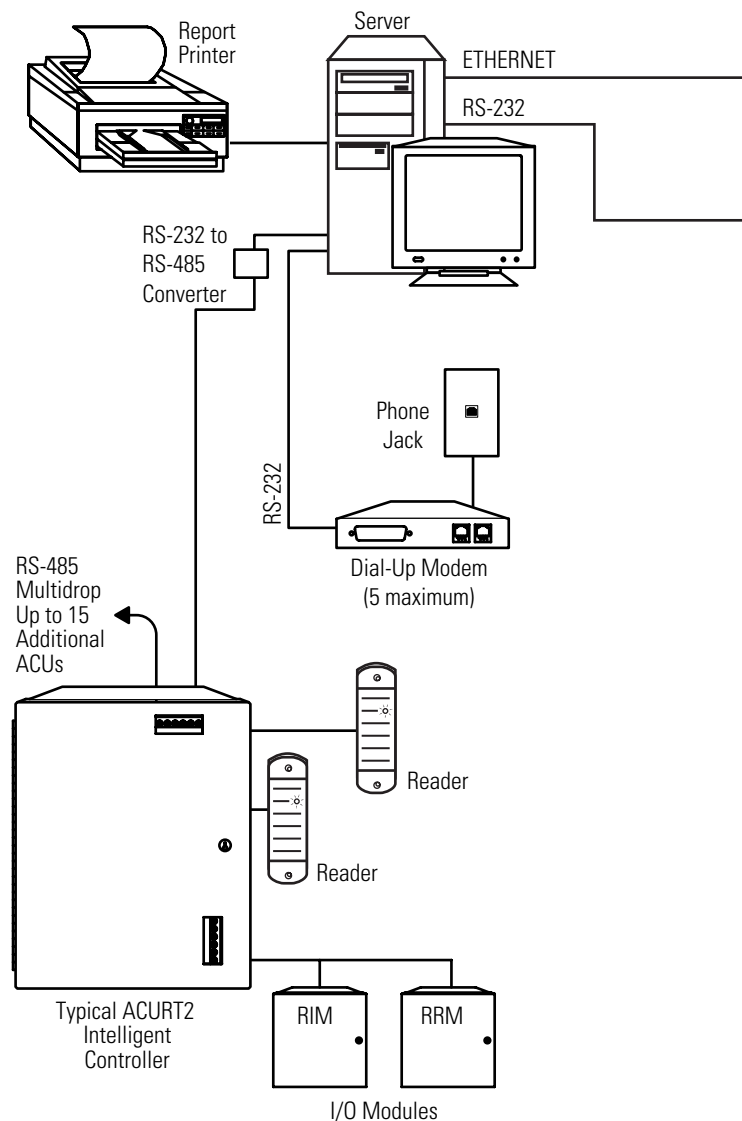
Complete CCTV camera display with PTZ control allows operators to view an entire area leaving nothing unseen. These features are available directly from any of the Interactive Color Graphic maps.

Help Menu

Topaz is designed with ease of use in mind by incorporating help text, manuals and flyover prompts.

ACURT2 and ACURT4 Intelligent Controllers

Topaz is conveniently packaged in both two-door and four-door starter and expansion kits to easily accommodate all of your field applications. The ACURT2 and ACURT4 Intelligent Controllers feature state-of-the-art technology, optimizing both the flexibility and reliability required for today's access control and alarm

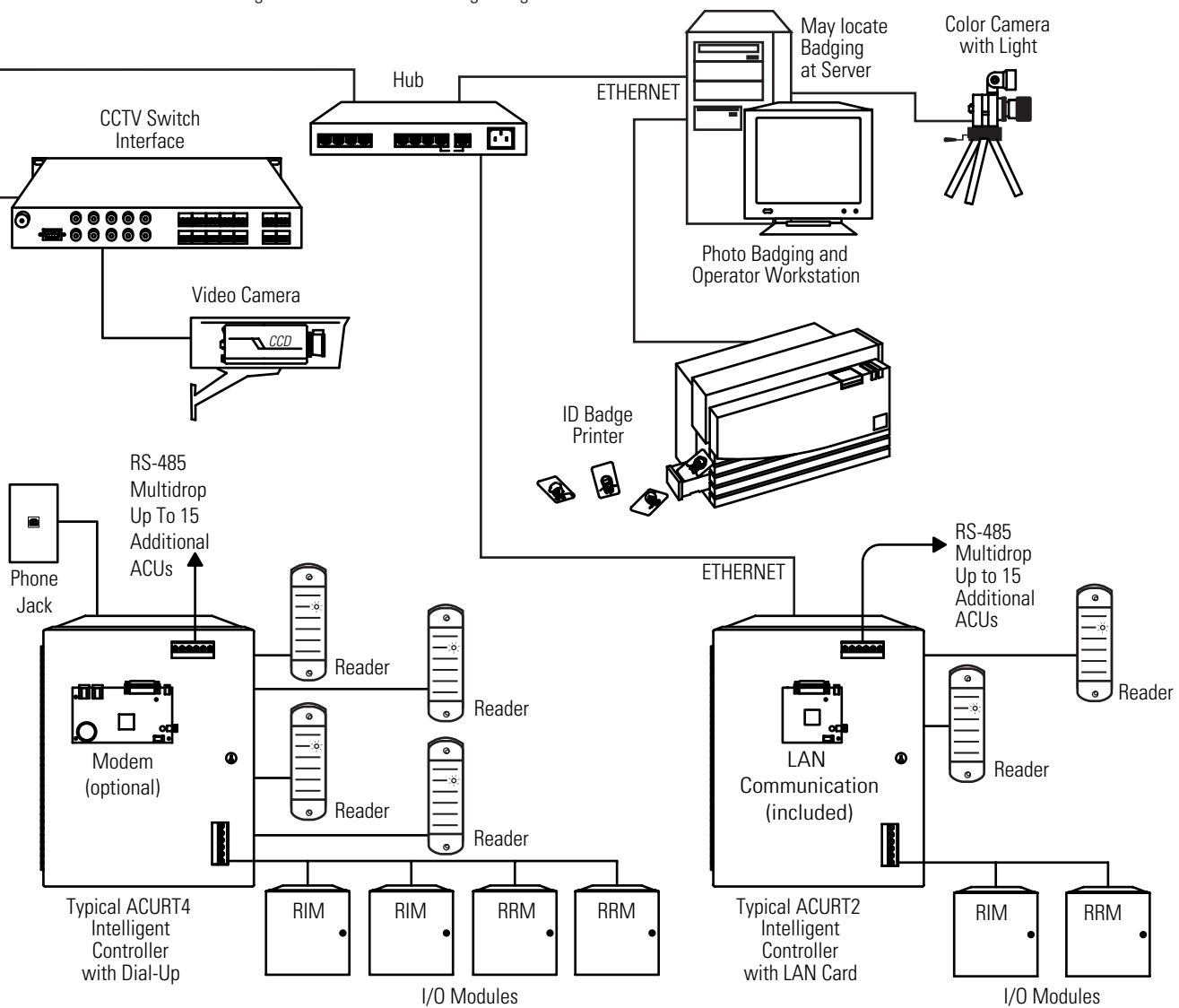


The Intelligent Choice for Access Control

monitoring environments. The ACURT2 supports two readers and/or keypads and the ACURT4 supports four readers and/or keypads. Both panels support magnetic stripe, Wiegand, barium ferrite, barcode, proximity, biometric and smart card technologies. The panels were designed for installation ease and are equipped with a removable hinge enclosure cover, a point-to-point wiring template and a wide range of diagnostic LEDs.

The ACURT2 and ACURT4 include connections for two/four readers and/or keypads. The ACURT2 has six six-state supervised inputs and ACURT4 has 12 six-state supervised inputs, which include false alarm filtering and utilization of custom digital signal

processing. In addition, up to four Remote Input Modules (RIM), each with 16 six-state supervised alarm inputs, three un-supervised alarm inputs and two relay outputs, may be connected using the on-board RS-485 expansion module communication port. The ACURT2 has four SPDT relay outputs, and the ACURT4 has eight SPDT relay outputs configurable for door locks, local annunciation, or auxiliary outputs. In addition, up to four Remote Relay Modules (RRM), each with eight DPDT and eight SPDT relays and two unsupervised inputs, may be connected to each ACURT field panel using the on-board RS-485 expansion module communication port.



All RIM and RRM panels require external 24 VDC power (UL-UPS-24V).

Specifications

Base System Capacity

- Readers: 64
- Field Panels: 16
- Alarm Points: 1,024
- Relay Outputs: 1,024
- Log File Size: 40 MB
- Holidays: 32
- Color Graphics: Yes
- CCTV Switching: Yes
- Access Groups: 64
- Access Groups/Card: 8
- Workstations (in addition to File Server): 4
- Cardholders: 4,000
- LAN Devices: 16
- Instruction Messages: 64
- Time Schedules: 127
- Operator Password: 64
- Serial Ports: 5
- Elevator Control: Yes
- Photo ID Badging: Yes
- Security Areas: 256
- Security Areas/Card: 8

Maximum System Capacity

- Readers: 256
- Field Panels: 64
- Cardholders: 16,000
- LAN Devices: 64

PC Requirements

- Pentium-based PC hardware
- Processor speed: 500 MHz minimum
- Windows 2000 Pro Operating System
- Monitor resolution: 1024 x 768 pixels x 65,535 colors
- RAM: 128 MB minimum
- Video memory: 4 MB
- Sound card and speakers: Yes
- Floppy disk: Required for workstation setup
- Video capture card: Optional
- External modem: Optional
- Serial RS-232 ports: 1 minimum
- Parallel Ports: 1 minimum
- Hard disk space: 2 GB
- CD ROM drive: 20x
- Ethernet card: Optional
- USB: Optional

Ordering Information

Part Number	Product Description
Starter Kits:	
	Packages A-D come with Topaz software, a two reader panel (ACURT2) or four reader panel (ACURT4), readers, 50 proximity cards, manual, RS-232 to RS-485 converter, terminator, and a 6' DB9 to DB25 cable
TPZ-SYS-A	Two reader system (two TPZ-RPP2-60 readers)
TPZ-SYS-B	Two reader system (two TPZ-RPP2-50 mullion readers)
TPZ-SYS-C	Four reader system (four TPZ-RPP2-60 readers)
TPZ-SYS-D	Four reader system (four TPZ-RPP2-50 mullion readers)
TPZ-UPG	System upgrade/expansion kit. Each kit adds 64 readers, 4,000 cardholders, 16 field panels and 16 LAN devices (maximum of 3 may be used)
TPZ-CONFIG-PC	Topaz pre-configured PC for server or workstation (must purchase starter kit or Topaz software)
ACURT2-EX-PP	Two reader control panel with two TPZ-RPP2-60 readers
ACURT2-EX-MU	Two reader control panel with two TPZ-RPP2-50 (mullion) readers
ACURT4-EX-PP	Four reader control panel with four TPZ-RPP2-60 readers
ACURT4-EX-MU	Four reader control panel with four TPZ-RPP2-50 (mullion) readers
TPZ-RIM-1	Remote Input Module with enclosure and lock
TPZ-RRM-1	Remote Relay Module with enclosure and lock
TPZ-SRVR-SW	Topaz server software
TPZ-WKSTA-SW	Topaz workstation software
ACURT2	Two reader control panel with 16 MB RAM, LAN port
ACURT4	Four reader control panel with 16 MB RAM, LAN port
Video Imaging and Badging	
TPZ-VIB	Badging kit with capture card
TPZ-P310-C	Eltron P310C 144 card/hour badge printer
TPZ-VPO-4	50 PVC overlays for TPZ-CPP2-1 (ProxCard II)
TPZ-CBP-A1	50 direct print PVC cards (no technology)
TPZ-VPR-7	Printer ribbon (200 prints, four-color)

Additional Topaz parts can be found in the price guide.



GE Interlogix
InfoGraphics