



TRACcess® Manager

TRACcess® Manager is the dynamic database behind the TRACcess System. This flexible management tool can be administered from any Internet-connected personal computer.

The TRACcess Manager gives you a robust database system with easy-to-use web-based screens and secure data center reliability. TRACcess Manager is a powerful management and productivity tool that allows you to track entry into any site and design different levels of access control. Activity reports generated by key holder or site location help you manage employees, contractors and other key holders. Tracking improves accountability and performance. The TRACcess Manager gives you the control and management information you need to:

- Verify the worker performance you're paying for with Activity Reports
- Improve control with various access levels for different key holders
- Increase accountability and reduce escorting costs by tracking where key holders have been by date and time
- Provide speedy and accurate site investigations to increase your bottom line

TRACcess Manager allows you to easily design the system to fit your company's specific access needs. Key holders may have access to a single device, group of devices or all devices. Use TRACcess Manager to program and assign product, set TRACkey expiration schedules and define device access requirements. The TRACcess Manager resides at a secure data center with redundant systems and data backup at multiple locations to provide reliable site access and management information on demand.

- Administer database or view reports from any Internet-connected PC
- Intuitive web-based screens with drop-down help
- Secure system – multiple levels of access; total system redundancy
- Database management software resides on the system side

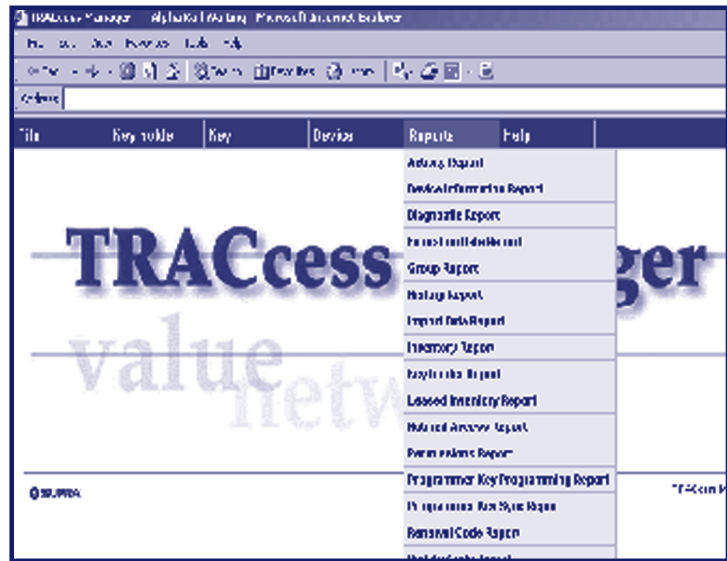


TRACcess® — One Solution. Infinite Possibilities.



TRACcess® Manager System Features

- Familiar Internet browser with web-based screens
- Requires a computer with Internet access and Internet Explorer 5.01 (or greater)
- Administer database or view reports from any Internet-connected PC
- Database management software resides on the system side
- SQL Database—easily exportable to other applications
- Intuitive screens and task wizards for easy database administration
- Variety of reports for more effective management
- Different access levels for better security
 - Administrator
 - Operator
 - Key holder
 - View Only
- Secure data center with redundant features
 - Controlled environment
 - Redundant, high-bandwidth connectivity
 - Power from two power companies with generator backup
 - 24x7 IS support
- Database, Internet, and Voice Servers
- System security
 - Firewall to restrict unauthorized access
 - Up to 128-bit SSL encryption
 - More than five failed attempts to enter system blocks user for 20 minutes at a time
 - Four physical levels of security
- Redundant database—data physically resides in multiple locations
 - Two data centers
 - Nightly tape backup that resides offsite
- Manual code generation backup at SUPRA®
- Toll-free support
 - Automated key holder service
 - Key holder support
 - Technical support



TRACKey Activity Report
Sort by: Serial #, Date
Select: All

Date	Device #	Product	Site Name (ID)	Address	City	State
163258	Unlimited		503-581 9101	Western Division (Brown)	503 391-7777	
Megan Thompson (Bob Cegon)						
8/18/99 13:15	7034772	TRAC-Padlock	Substation 4	321 West St.	Albany	OR
8/18/99 13:04	7034772	TRAC-Padlock	Substation 4	321 West St.	Albany	OR
7/14/99 13:09	7039192	TRAC-Padlock	South Tower	SE 121 St #345	Salem	OR
7/14/99 13:08	7039192	TRAC-Padlock	South Tower	SE 121 St #345	Salem	OR
163269	Unlimited		503-581 9101	Northern Division (Meiser)	503-585-4123	
Bob Jones (Scott Gilchrist)						
7/15/99 07:25	7043188	TRAC-Station	West Wing	1234 Maple St	Oakland	OR
7/15/99 07:24	7043188	TRAC-Station	West Wing	1234 Maple St	Oakland	OR

Device Activity Report
Sort by: Date
Select: From 7032304 To 7032304

Date	Time	TRACKey Number	Name	ID	Keyholder Phone	Office Name	Office Phone
7032304		TRAC-Padlock	West Wing (12456)	1234 Maple St	Oakland	OR	
3/15/99	07:09	163271	John Smith (Jim Young3)	503-391-7775	Pacific NW	503-581-5698	
3/15/99	07:08	163271	John Smith (Jim Young3)	503-391-7775	Pacific NW	503-581-5698	
2/9/99	11:33	166459	Bob Jones (W Brown1)	503-371-0001	Pacific NW	503-581-5647	
2/9/99	11:32	166459	Bob Jones (W Brown1)	503-371-0001	Pacific NW	503-581-5647	
2/8/99	11:25	166458	Larry Brown (W Brown3)	503-581-9101	Western Div	503-581-9101	
2/8/99	11:24	166458	Larry Brown (W Brown3)	503-581-9101	Western Div	503-581-9101	
2/8/99	08:31	166459	Mary Birch (W Brown1)	503-371-2801	Pacific NW	503-581-9327	
2/8/99	08:30	166459	Mary Birch (W Brown1)	503-371-2801	Pacific NW	503-581-9327	

World Headquarters: 4001 Fairview Industrial Dr. SE • Salem, Oregon USA 97302
(800) 547-0252 • FAX (800) 375-9852 • www.supra-products.com

In Canada: 2100 Thurston Dr. Unit 15, Ottawa, Ontario K1G 4K8
In Canada: (800) 267-6317 • (613) 737-3623 • Fax: (613) 737-5517

