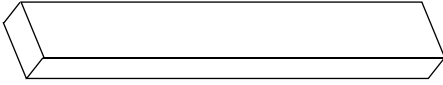
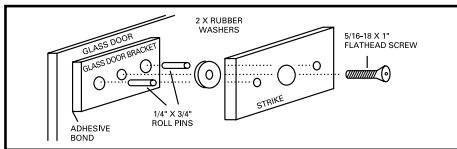


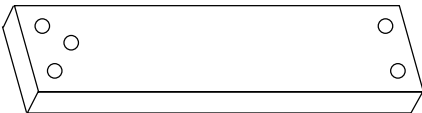
HARDWARE ACCESSORIES



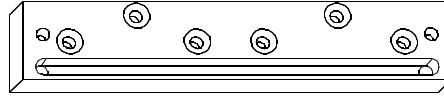
The **Stop Filler Plate** is used in installations where only **part of the magnet body is on the stop**. The plate extends the stop to provide a flat mounting surface for the magnet. Stop Filler Plates are 8" x 1-1/4" (Models 32 and 62) or 12" long (Model 82) with a varying thickness to match the stop thickness. Thicknesses offered are: 1/4", 3/8", 1/2" and 5/8" with a finish suffix of "CL" for clear anodized aluminum or "BK" for black anodized aluminum.



The **Glass Door Bracket** permits Magnalock® installation on a **solid glass door**. The bracket is permanently glued to the glass via a special adhesive. The strike plate then screws into the bracket as glass doors cannot be drilled. The part numbers are: GDB (bracket) and AKG (adhesive kit) and HEB-3G header bracket for glass.



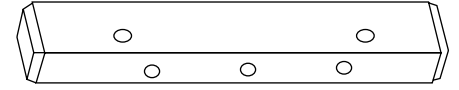
The **Aluminum Frame Shim Bracket** is for use with **aluminum frame glass doors**. The bracket spaces the magnet body down 1/2" to clear the blade stop and provides alternate mounting hardware for the strike plate as with the magnet body spaced down, the standard sex bolt can interfere with the glass. The part numbers are ASB-32/62/82 with a finish suffix of "CL" for clear anodized aluminum or "BK" for black anodized aluminum.



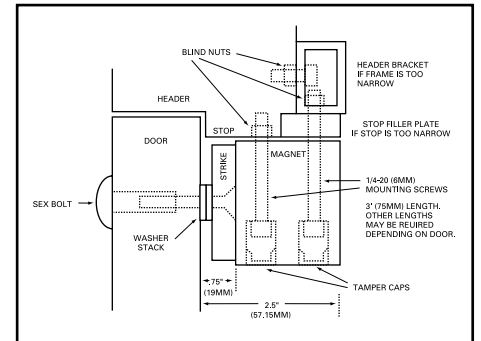
The **Concrete/Wood Frame Bracket** is used on concrete filled or wood door frames. On concrete frames, the bracket anchors to the frame via sheet metal screws and the magnet mounts to the bracket via machine screws. The bracket includes a central splice area and avoids the problem of drilling a wireway through the concrete. On wood frames, 4" wood screws are employed to penetrate deeply into the header. Separate part numbers are used for the 32, 62 and 82 series Magnalock® CWB-32; CWB-62, CWB-82 with a finish suffix of "CL" for clear anodized aluminum or "BK" for black anodized aluminum.



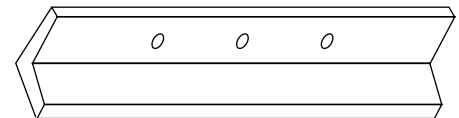
A wide array of Hardware Installation Accessories make putting a Magnalock anywhere easy! And don't forget World Famous 1-800-MAGLOCK support for instant installation help, advice and even custom wiring diagrams.



The **Universal Header Bracket** is used to **extend a narrow header** (often found on aluminum frame glass doors) to permit mounting of the Magnalock®. The bracket is positioned either to extend 1" or 1-1/2" and also serves to conceal the hookup cable within its hollow interior. Model UHB works with 32 or 62 series Magnalocks and the longer UHB-82 works with the Model 82. Both with a finish suffix of "CL" for clear anodized aluminum or "BK" for black anodized aluminum.



Mounting on outswinging door showing optional use of Stop Filler Plate and Universal Header Bracket.



Header Extension Brackets are aluminum with one side drilled for the supplied fasteners. They perform the same function as the Universal Header Bracket but offer a wider range of dimensions (1", 2" and 3"). The part numbers, HEB-1, HEB-2 and HEB-3 are suitable for the Model 32 and Model 62 series. The Model 82 requires a longer unit. Both are offered with a finish suffix of "CL" for clear anodized aluminum or "BK" for black anodized aluminum.

